

Specifications

Models	S-40		S-45	
Measurements	US	Metric	US	Metric
Working height maximum*	46 ft	14.19 m	51 ft	15.72 m
Platform height maximum	40 ft	12.19 m	45 ft	13.72 m
Horizontal reach maximum	31 ft 8 in	9.67 m	36 ft 8 in	11.12 m
Below ground reach	3 ft 2 in	0.97 m	4 ft 11 in	1.5 m
A Platform length - 8 ft model	3 ft	0.91 m	3 ft	0.91 m
Platform length - 6 ft model	2 ft 6 in	0.76 m	2 ft 6 in	0.76 m
B Platform width - 8 ft model	8 ft	2.44 m	8 ft	2.44 m
Platform width - 6 ft model	6 ft	1.83 m	6 ft	1.83 m
C Height - stowed	8 ft 2 in	2.49 m	8 ft 2 in	2.49 m
- stowed with Trax option	8 ft 2 in	2.49 m	8 ft 2 in	2.49 m
D Length - stowed	24 ft 3 in	7.39 m	27 ft 10 in	8.48 m
- transport (jib tucked under)			22 ft 4 in	6.80 m
E Width - standard tires	7 ft 6 in	2.30 m	7 ft 6 in	2.30 m
- Trax option	7 ft 7 in	2.31 m	7 ft 7 in	2.31 m
F Wheelbase	7 ft 3 in	2.20 m	7 ft 3 in	2.20 m
G Ground clearance - center	1 ft .5 in	0.32 m	1 ft .5 in	0.32 m

Productivity

Lift capacity	500 lbs	227 kg	500 lbs	227 kg
Platform rotation	160°		160°	
Vertical jib rotation			135°	
Turntable rotation	360° continuous		360° continuous	
Turntable tailswing	2 ft 10 in	0.86 m	2 ft 10 in	0.86 m
Drive speed - stowed	4.8 mph	7.7 km/h	4.8 mph	7.7 km/h
- raised or extended	0.68 mph	1.1 km/h	0.68 mph	1.1 km/h
- Trax option stowed	2.5 mph	4.0 km/h	2.5 mph	4.0 km/h
- Trax option raised	0.68 mph	1.1 km/h	0.68 mph	1.1 km/h
Gradeability - 2WD - stowed**	30%		30%	
- 4WD - stowed**	40%		40%	
Turning radius - inside	6 ft 8 in	2.0 m	6 ft 8 in	2.0 m
- outside	15 ft 8 in	4.78 m	15 ft 8 in	4.78 m
- Trax option inside	7 ft 9 in	2.36 m	7 ft 9 in	2.36 m
- Trax option outside	17 ft	5.18 m	17 ft	5.18 m
Controls	12 V DC proportional		12 V DC proportional	
Tires - RT lug	12.5L-16SL front / 12-16.5 NHS rear			
	Trax		Trax	

Power

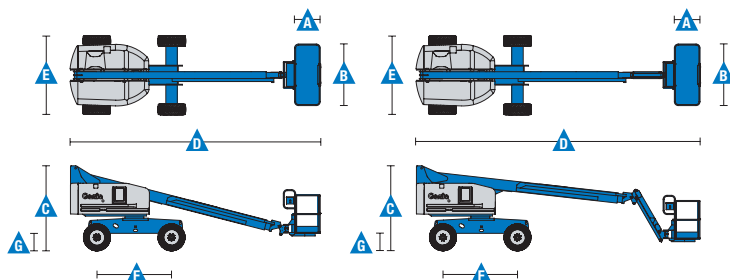
Power source	49 hp (36.54 kW) Deutz diesel T4f D2.9L4 49 hp (36.54 kW) Perkins diesel T4f 404D-22 60hp (44.74kW) Ford gas/LPG MSG425			
Auxiliary power unit	12 V DC		12 V DC	
Hydraulic tank capacity	45 gal	170 L	45 gal	170 L
Fuel tank capacity	20 gal	76 L	20 gal	76 L

Weight***

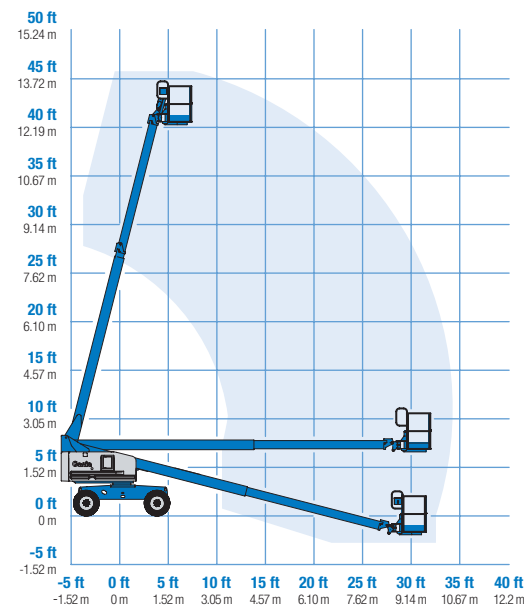
Standard	12,310 lbs	5,584 kg	15,270 lbs	6,926 kg
Trax	13,680 lbs	6,205 kg	16,670 lbs	7,561 kg

Standards Compliance

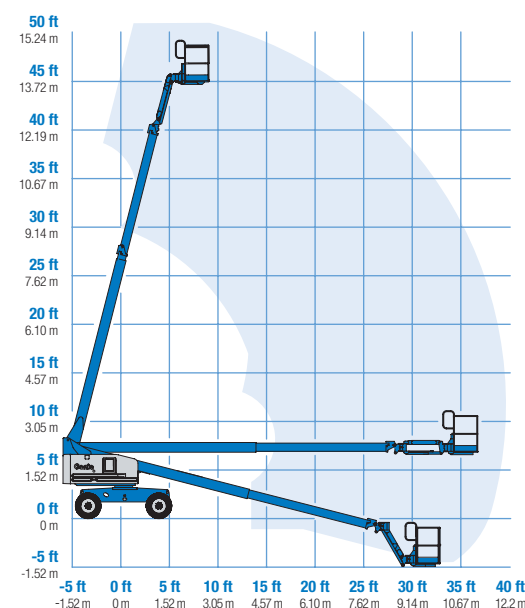
ANSI A92.5, CSA B354.4, EN 280, AS 1418.10



Range Of Motion S-40



Range Of Motion S-45



* The metric equivalent of working height adds 2 m to platform height. U.S. adds 6 ft to platform height.

** Gradeability applies to driving on slopes. See operator's manual for details regarding slope ratings.

*** Weight will vary depending on options and/or country standards.

TOTAL
WAREHOUSE

www.totalwarehouse.com

833-868-2500

Features

Standard Features	Easily Configured To Meet Your Needs	Options & Accessories
Measurements <ul style="list-style-type: none"> S-40 <ul style="list-style-type: none"> 46 ft (14.19 m) working height 31 ft 8 in (9.65 m) horizontal reach 500 lbs (227 kg) lift capacity S-45 <ul style="list-style-type: none"> 51 ft (15.72 m) working height 36 ft 8 in (11.18 m) horizontal reach 500 lbs (227 kg) lift capacity Productivity <ul style="list-style-type: none"> Self-leveling platform 160° hydraulic platform rotation Proportional joystick controls Fuel select switch on platform and ground control panels (Gas/LPG models)* Drive enable AC power cord to platform Horn Hour meter Tilt alarm Descent alarm 360° continuous turntable rotation Locking turntable covers Positive traction drive Two speed wheel motors Telematics ready connector Entry Toeboard Lift Guard™ Contact Alarm Power <ul style="list-style-type: none"> 12 V DC auxiliary power Anti-restart engine protection Auto engine fault shutdown Intake air heater (Deutz engine) 	Platform Options <ul style="list-style-type: none"> Steel 8 ft (2.44 m) tri entry with side swing gate (standard) Steel 6 ft (1.83 m) dual entry with side swing gate Jib Options <ul style="list-style-type: none"> Non-jib (S-40 only) 5 ft (1.52 m) jib boom (S-45 only) Engine Options <ul style="list-style-type: none"> 49 hp (36.54 kW) Deutz diesel T4f** (standard) 49 hp (36.54 kW) Perkins diesel T4f** 60hp (44.74kW) Ford Gas/LPG Drive Options <ul style="list-style-type: none"> 2WD 4WD (standard) Axle Options <ul style="list-style-type: none"> Active oscillation (4WD) Non-oscillating (2WD) Tire Options <ul style="list-style-type: none"> Rough terrain air-filled (standard) Rough terrain foam-filled Rough terrain non-marking (air or foam-filled) High flotation air-filled Sealant treated air-filled Trax (track system) 	Productivity Options <ul style="list-style-type: none"> Half-mesh platform inserts Platform top auxiliary rail Welder Ready package Air line to platform Hydraulic oil cooler Specialty hydraulic oil (cold weather, fire resistant, or biodegradable) Hostile environment kit Deluxe hostile environment kit Aircraft protection package (6 ft platform only) Thumb rocker steer Alarm package Panel cradle package Lockable platform control box covers Tow package Work light package Operator Protective Structure*** Fall Arrest Bar Power Options <ul style="list-style-type: none"> Engine gauge package* AC generator packages (110V/60Hz - 220V/50Hz, 2200W) Cold Weather Packages Diesel scrubber/muffler (catalytic muffler, Tier 4i only) LPG tank 33.5 lbs (15.19 kg) capacity Intake air pre-cleaner (Tier 4i only)



* Available only with Ford engine
 ** Also available as Tier 4i in limited regions
 *** Available through aftermarket parts only

TOTAL

WAREHOUSE

www.totalwarehouse.com
 833-868-2500