

Self-Propelled Telescopic Booms

S[®]-40 XC[™], S-45 XC, S-40 TraX[™] & S-45 TraX

Specifications

Models	S-40 XC		S-45 XC	
	US	Metric	US	Metric
Measurements				
Working height maximum*	46 ft	14.19 m	51 ft	15.72 m
Platform height maximum	40 ft	12.19 m	44 ft 6 in	13.56 m
Horizontal reach maximum	31 ft 8 in	9.67 m	36 ft 2 in	11.02 m
Below ground reach	1 ft	0.97 m	4 ft 2 in	1.27 m
A Platform length - 8 ft model	3 ft	0.91 m	3 ft	0.91 m
Platform length - 6 ft model	2 ft 6 in	0.76 m	2 ft 6 in	0.76 m
B Platform width - 8 ft model	8 ft	2.44 m	8 ft	2.44 m
Platform width - 6 ft model	6 ft	1.83 m	6 ft	1.83 m
C Height - stowed	8 ft 3 in	2.51 m	8 ft 3 in	2.51 m
- stowed with Trax option	8 ft 5 in	2.56 m	8 ft 5 in	2.56 m
D Length - stowed	26 ft 4 in	8.03 m	31 ft 1 in	9.47 m
E Width - standard tires	8 ft 2 in	2.49 m	8 ft 2 in	2.49 m
- Trax option	8 ft 2 in	2.31 m	8 ft 2 in	2.31 m
F Wheelbase	8 ft 1 in	2.46 m	8 ft 1 in	2.46 m
G Ground clearance - center	1 ft .5 in	0.32 m	1 ft .5 in	0.32 m

Productivity

Lift capacity	1000/660 lbs	300/454 kg	1000/660 lbs	300/454 kg
Platform rotation	160°		160°	
Vertical jib rotation			133°	
Turntable rotation	360° continuous		360° continuous	
Turntable tailswing	37.5 in	0.86 m	37.5 in	0.86 m
Drive speed - stowed	4.0 mph	7.7 km/h	4.0 mph	7.7 km/h
- raised or extended	0.68 mph	1.1 km/h	0.68 mph	1.1 km/h
- Trax option stowed	2.5 mph	4.0 km/h	2.5 mph	4.0 km/h
- Trax option raised	0.68 mph	1.1 km/h	0.68 mph	1.1 km/h
Maximum slope rating**	45%		45%	
Turning radius - inside	6 ft 10 in	2.0 m	6 ft 10 in	2.0 m
- outside	17 ft 2 in	4.78 m	17 ft 2 in	4.78 m
- Trax option inside	7 ft 9 in	2.36 m	7 ft 9 in	2.36 m
- Trax option outside	17 ft	5.18 m	17 ft	5.18 m
Controls	12 V DC proportional		12 V DC proportional	
Tires - RT lug	315/55D20-12ply		315/55D20-12ply	
	Trax		Trax	

Power

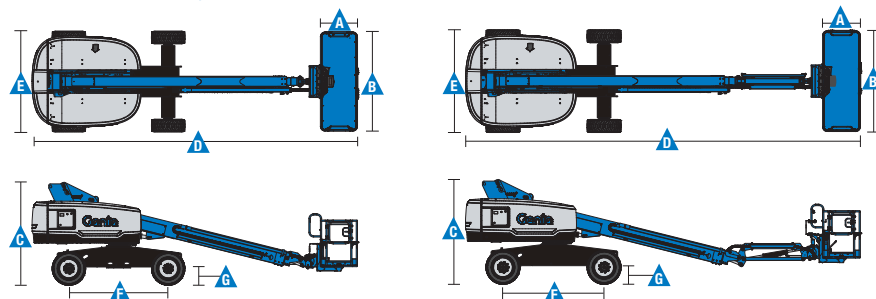
Power source	49 hp (36.54 kW) Deutz diesel T4f D2.9L4 48 hp (35.79 kW) Perkins turbo diesel T4f 404F-E22T 60hp (44.74kW) Ford gas/LPG MSG425			
Auxiliary power unit	12 V DC		12 V DC	
Hydraulic tank capacity	45 gal	170 L	45 gal	170 L
Fuel tank capacity	20 gal	76 L	20 gal	76 L

Weight***

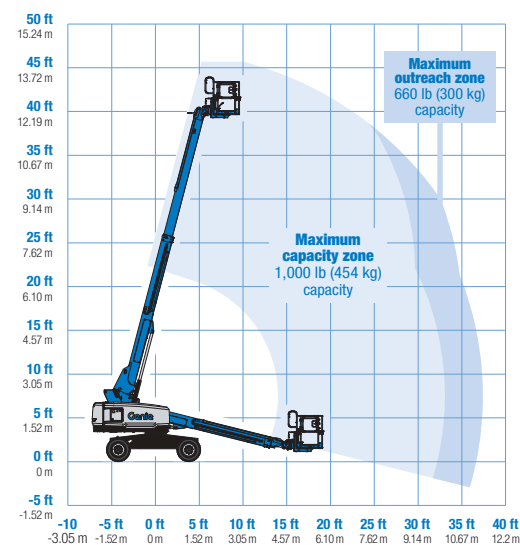
Standard	13,649 lbs	6,191 kg	15,455 lbs	7,010 kg
Trax	15,054 lbs	6,828 kg	16,860 lbs	7,648 kg

Standards Compliance

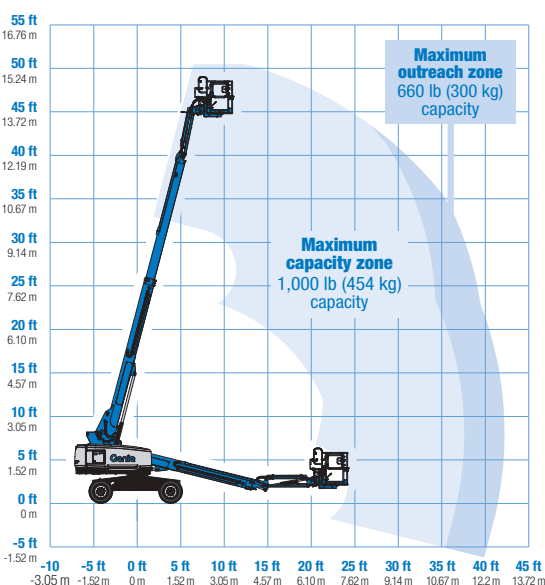
ANSI A92.20, CSA B354.6 and AS 1418.10



Range Of Motion S-40 XC



Range Of Motion S-45 XC



* The metric equivalent of working height adds 2 m to platform height. U.S. adds 6 ft to platform height.
** Gradeability applies to driving on slopes. See operator's manual for details regarding slope ratings.
*** Weight will vary depending on options and/or country standards.

TOTAL
WAREHOUSE

www.totalwarehouse.com
833-868-2500

Self-Propelled Telescopic Booms

S[®]-40 XC[™], S-45 XC, S-40 TraX[™] & S-45 TraX

Features

Standard Features	Easily Configured To Meet Your Needs	Options & Accessories
Measurements S-40 XC and S-40 TraX <ul style="list-style-type: none"> 46 ft (14.19 m) working height 31 ft 8 in (9.65 m) horizontal reach 660 lbs (300 kg) unrestricted and 1,000 lbs (454 kg) restricted lift capacity S-45 XC and S-45 TraX <ul style="list-style-type: none"> 51 ft (15.72 m) working height 36 ft 2 in (11.02 m) horizontal reach 660 lbs (300 kg) unrestricted and 1,000 lbs (454 kg) restricted lift capacity 	Platform Options <ul style="list-style-type: none"> Steel 8 ft (2.44 m) tri entry with side swing gate (standard) Steel 6 ft (1.83 m) dual entry with side swing gate Jib Options <ul style="list-style-type: none"> Non-jib (S-40 only) 5 ft (1.52 m) jib boom (S-45 only) Engine Options <ul style="list-style-type: none"> 49 hp (36.54 kW) Deutz diesel T4f** (standard) 48 hp (35.79 kW) Perkins turbo diesel T4f** 404F-E22T 60hp (44.74kW) Ford Gas/LPG Tire Options <ul style="list-style-type: none"> Rough terrain foam-filled (standard) Rough terrain non-marking (air or foam-filled) Trax (track system) Axels <ul style="list-style-type: none"> Active Oscillation (4WD) 	Productivity Options <ul style="list-style-type: none"> Lift Guard Platform Mesh - Half Lift Guard Platform Mesh - Full Lift Guard Platform Mesh - Screen (8ft platform only) Lift Power <ul style="list-style-type: none"> 3 kW AC Generator 12 kW 240 V / 60 Hz Welder Ready package 7kw Welder Ready package 12 kW Welder Equipped, Select Lincoln or Miller (12 kW options include a fire extinguisher and fireproof sleeves) Platform top auxiliary rail Welder Ready package Air line to platform Specialty hydraulic oil (cold weather, fire resistant, or biodegradable) Hostile environment kit Deluxe hostile environment kit Aircraft protection package (6 ft platform only) Thumb rocker steer Alarm package Panel cradle package Lockable platform control box covers Tow package Work light package Operator Protective Structure*** Fall Arrest Bar
Productivity <ul style="list-style-type: none"> Self-leveling platform 160° hydraulic platform rotation Proportional joystick controls Fuel select switch on platform and ground control panels (Gas/LPG models)* Drive enable AC power cord to platform Horn Hour meter Tilt alarm Descent alarm 360° continuous turntable rotation Locking turntable covers Positive traction drive Two speed wheel motors Entry Toeboard Lift Guard[™] Contact Alarm Work Tray Hydraulic oil cooler 	<p>* Available only with Ford engine ** Also available as Tier 4i in limited regions *** Available through aftermarket parts only</p>	Power Options <ul style="list-style-type: none"> Engine gauge package* Cold Weather Packages Diesel scrubber/muffler (catalytic muffler, Tier 4i only) LPG tank 33.5 lbs (15.19 kg) capacity Intake air pre-cleaner (Tier 4i only)



TOTAL
WAREHOUSE

www.totalwarehouse.com
833-868-2500