

### Specifications

| Models                                | SX-180     |         |
|---------------------------------------|------------|---------|
| Measurements                          | US         | Metric  |
| Working height maximum*               | 186 ft     | 56.86 m |
| Platform height maximum               | 180 ft     | 54.86 m |
| Horizontal reach maximum              | 80 ft      | 24.38 m |
| Below ground reach                    | 2 ft       | 0.61 m  |
| <b>A</b> Platform length              | 3 ft       | 0.91 m  |
| <b>B</b> Platform width               | 8 ft       | 2.44 m  |
| <b>C</b> Height - stowed              | 10 ft      | 3.05 m  |
| <b>D</b> Length - stowed              | 53 ft 1 in | 16.18 m |
| Length - transport (jib tucked under) | 42 ft 8 in | 13.00 m |
| <b>E</b> Width - axles retracted      | 8 ft 2 in  | 2.49 m  |
| Width - axles extended                | 16 ft 6 in | 5.03 m  |
| <b>F</b> Wheelbase - axles retracted  | 16 ft 6 in | 5.03 m  |
| Wheelbase - axles extended            | 15 ft 6 in | 4.72 m  |
| <b>G</b> Ground clearance - center    | 1 ft 3 in  | 0.38 m  |

### Productivity

|   |                      |           |
|---|----------------------|-----------|
| Lift capacity                           | 750 lb               | 340 kg    |
| Platform rotation                       | 160°                 |           |
| Vertical jib rotation                   | 135°                 |           |
| Horizontal jib rotation                 | 60°                  |           |
| Turntable rotation                      | 360° continuous      |           |
| Turntable tailswing - axle retracted    | 3 ft 9 in            | 1.14 m    |
| Turntable tailswing - axle extended     | 3 ft 6 in            | 1.07 m    |
| Drive speed - stowed                    | 2.3 mph              | 3.7 km/h  |
| Drive Speed - out of stowed             |                      |           |
| below 125 ft (38.1 m)                   | 0.4 mph              | 0.65 km/h |
| above 125 ft (38.1 m)                   | 0.1 mph              | 0.17 km/h |
| Gradeability - stowed                   | 35%                  |           |
| Turning radius - axle retracted: inside | 20 ft 7 in           | 6.27 m    |
| outside                                 | 28 ft 1 in           | 8.56 m    |
| Turning radius - axle extended: inside  | 9 ft 11 in           | 3.02 m    |
| outside                                 | 24 ft 1 in           | 7.34 m    |
| Controls                                | 12 V DC proportional |           |
| Tires                                   | 445D50/710HD         |           |

### Power

|                         |  |       |
|-------------------------|--|-------|
| Power source            | 74 hp (55 kW) Deutz turbo diesel, Tier 4f, 2.9 L<br>74 hp (55 kW) Perkins turbo diesel, Tier 4f, 854F-E34T |       |
| Auxiliary power unit    | 12 V DC  |       |
| Hydraulic tank capacity | 110 gal  | 416 L |
| Fuel tank capacity      | 50 gal   | 189 L |

|           |           |           |
|-----------|-----------|-----------|
| Weight*** | 55,000 lb | 24,948 kg |
|-----------|-----------|-----------|

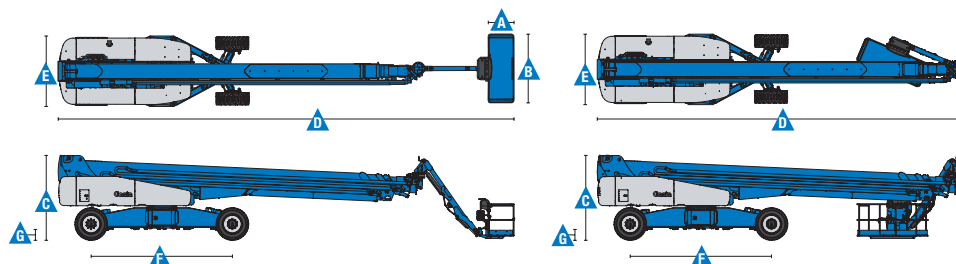
### Standards Compliance

ANSI A92.5, CSA B354.4, EN 280, AS 1418.10

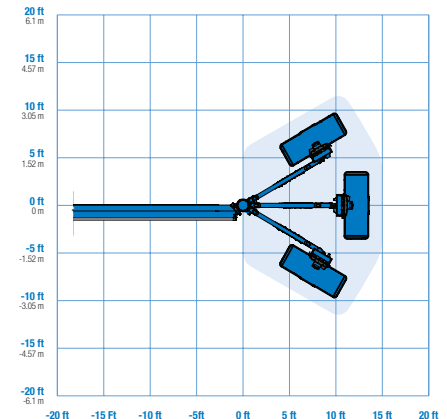
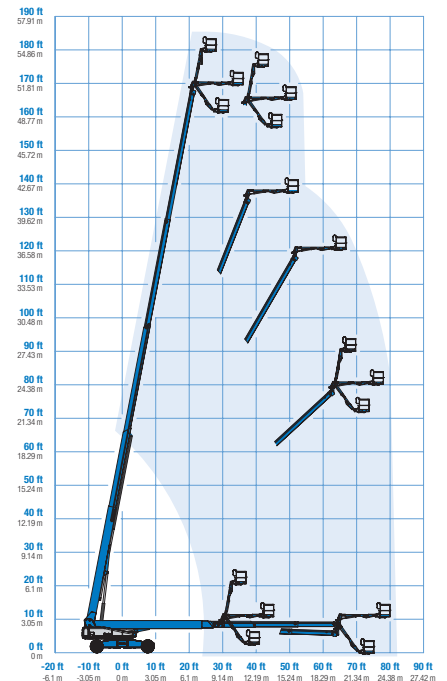
\* The metric equivalent of working height adds 2 m to platform height. U.S. adds 6 ft to platform height.

\*\* Gradeability applies to driving on slopes. See operator's manual for details regarding slope ratings.

\*\*\* Weight will vary depending on options and/or country standards.



### Range Of Motion SX-180



**TOTAL**  
WAREHOUSE

www.totalwarehouse.com  
833-868-2500

### Features

| Standard Features   | Easily Configured To Meet Your Needs  | Options & Accessories  |
|---|---|--|
| <p><b>Measurements</b></p> <ul style="list-style-type: none"> <li>• 186 ft (57 m) working height</li> <li>• 80 ft (24.4 m) horizontal reach</li> <li>• 750 lb (340 kg) lift capacity</li> </ul> <p><b>Productivity</b></p> <ul style="list-style-type: none"> <li>• XChassis™ extendable axles</li> <li>• 10 ft (3.05 m) 60° rotating jib</li> <li>• Self-leveling platform</li> <li>• 160° hydraulic platform rotation</li> <li>• Proportional joystick controls</li> <li>• Hydraulic oil cooler</li> <li>• Drive enable</li> <li>• AC power in the platform</li> <li>• Horn</li> <li>• Hour meter</li> <li>• Tilt alarm</li> <li>• Descent alarm</li> <li>• 360° continuous turntable rotation</li> <li>• Positive traction 4WD</li> <li>• Two speed wheel motors</li> <li>• Four wheel high angle steer</li> <li>• Four steering modes: front, rear, crab and coordinated</li> <li>• On board full diagnostics and engine monitoring display</li> <li>• Work tray</li> <li>• Entry Toeboard</li> <li>• Lift Guard™ Contact Alarm</li> </ul> <p><b>Power</b></p> <ul style="list-style-type: none"> <li>• 7.5 kW welder ready generator <ul style="list-style-type: none"> <li>- 208V/120V/60Hz (North America)</li> <li>- 415V/240V/50Hz (Europe &amp; Australia)</li> <li>- 110V/55V/50Hz (UK)</li> </ul> </li> <li>• 12 V DC auxiliary power</li> <li>• Auto engine fault protection</li> <li>• Swing out engine tray</li> </ul> | <p><b>Platform Options</b></p> <ul style="list-style-type: none"> <li>• Steel 6 ft (1.83 m) platform with side swing gate</li> <li>• 8 ft (2.44 m) tri-entry platform with side swing gate (standard)</li> </ul> <p><b>Engine Options</b></p> <ul style="list-style-type: none"> <li>• 74 hp (55 kW) Deutz turbo diesel, T4f* (standard)</li> <li>• 74 hp (55 kW) Perkins turbo diesel, T4f*</li> </ul> <p><b>Drive/Steer</b></p> <ul style="list-style-type: none"> <li>• 4WD (standard)</li> <li>• 4WS (standard)</li> </ul> <p><b>Tires</b></p> <ul style="list-style-type: none"> <li>• Rough terrain foam-filled (standard)</li> </ul> | <p><b>Productivity Options</b></p> <ul style="list-style-type: none"> <li>• Lift Guard Platform Mesh - Half</li> <li>• Lift Guard Platform Mesh - Full</li> <li>• Welder package</li> <li>• Welder Ready package</li> <li>• Cold weather, fire resistant, or biodegradable hydraulic oil</li> <li>• Hostile environment kit</li> <li>• Deluxe hostile environment kit</li> <li>• Thumb rocker steer</li> <li>• Light package</li> <li>• Entry toe boards</li> <li>• Pipe cradle (pair)</li> <li>• Alarm package**</li> <li>• Panel cradle package</li> <li>• Lockable platform control box cover</li> <li>• Operator Protective Structure**</li> <li>• Fall Arrest Bar</li> <li>• Anemometer</li> </ul> <p><b>Power Options</b></p> <ul style="list-style-type: none"> <li>• 12.5 kW welder ready AC generator 208V/110V/60Hz</li> <li>• Cold weather kit</li> <li>• Diesel scrubber/catalytic muffler</li> <li>• Intake air pre-cleaner</li> <li>• Positive air shutoff system (Deutz engine only)</li> </ul> |



\* Also available as Tier 4i in limited regions  
\*\* Available through aftermarket parts only

# TOTAL

## WAREHOUSE

[www.totalwarehouse.com](http://www.totalwarehouse.com)

833-868-2500