

**NISSAN**  
FORKLIFT

# Platinum RPX Series

Walkie & Walkie/Rider Pallet Truck / AC-Powered Models

**6,000 & 8,000 lb.**  
Capacities

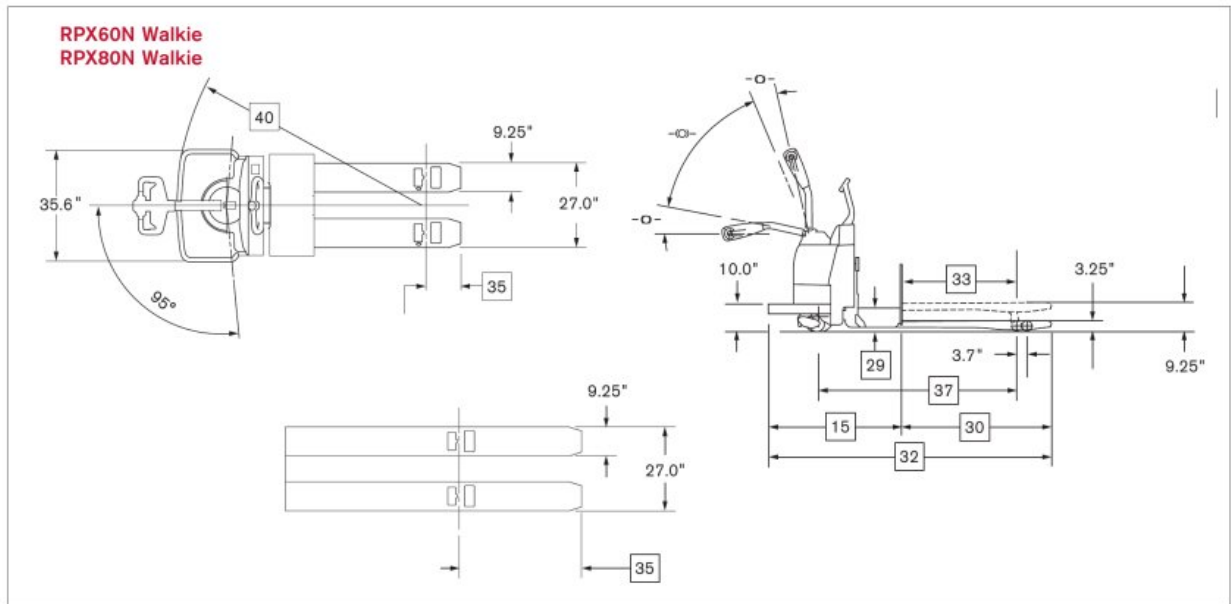


**TOTAL**  
WAREHOUSE

www.totalwarehouse.com  
833-868-2500

# RPX<sub>series</sub>

## Dimensions



## Options



**Coast control** allows truck to slowly coast to a complete stop, for more efficient order picking. Actuated manually using a toggle lever or by an electronic switch (shown).



**Load backrests** have a slip-on or tilt down design available to facilitate battery change out. Tilt down includes Nissan's EZ release feature.



**Optional multi-function LCD digital display** includes PIN codes to restrict truck access, selectable performance modes, battery discharge indicator and speedometer. It also offers on-board diagnostics, troubleshooting and adjustment.



**Magnetic convenience tray** adheres to the top of the battery box. Includes shrink wrap holder and room for operator's tools.



**Battery roller** design provides easier battery change out. Includes removable side gates.



**Sidetracker** promotes greater productivity by allowing operator to walk beside truck while performing low level order picking<sup>1</sup>.

<sup>1</sup> Must be ordered with manual Coast Control or electronic Click-n-Coast feature.

# 6,000 & 8,000 lb. capacities

## Main Truck Specifications

				Nissan	Nissan		
CHARACTERISTICS	1	Manufacturer's Name		Nissan	Nissan	1	
	2	Model	Model designation	RPX60N	RPX80N	2	
			Long model code	RPXT2W2G60NV	RPXT2W2G80NV	3	
	4	Load Capacity	Rated capacity	lb (kg)	6000 (2720)	8000 (3630)	4
	5	Power Type	Electric		24 Volt	24 Volt	5
	6	Operator Type			Walkie / Rider	Walkie / Rider	6
	7	Tire Type	Drive tire		Solid Rubber	Solid Rubber	7
			Caster wheels		Poly	Poly	8
			Load wheels		Vulkollan Poly	Vulkollan Poly	9
10	Wheels	Drive/caster/load (x=driven)	number	1x / 2 / 2	1x / 2 / 2	10	
FORKS	11	Fork Size	Outside spread	in (mm)	27 (685)	27 (685)	11
	12	Fork Height	Raised position	in (mm)	9.25 (235)	9.25 (235)	12
			Lowered position	in (mm)	3.25 (82.5)	3.25 (82.5)	13
	14	Individual Fork Width		in (mm)	9.25 (235)	9.25 (235)	14
DIMENSIONS	15	Overall Dimensions	Head length	in (mm)	42.9 (1090)	42.9 (1090)	15
	16	Width	Chassis	in (mm)	35.6 (905)	35.6 (905)	16
	17	Tires / Wheels	Drive tire -dia. x width	in (mm)	10 x 5 (254 x 127)	10 x 5 (254 x 127)	17
			Caster wheels - dia. x width	in (mm)	5 x 2.5 (127 x 64)	5 x 2.5 (127 x 64)	18
			Load wheels - dia. x width	in (mm)	3.25 x 6 (83 x 152)	3.25 x 6 (83 x 152)	19
SPEEDS	20	Speed - Travel	No load	mph (kph)	9.1 (14.6)	9.1 (14.6)	20
			Full load	mph (kph)	6.6 (10.6)	6.1 (9.8)	21
	22	Speed - Lift / Lower	No load	sec.	3.6 / 5.1	3.6 / 5.1	22
			Full load	sec.	5.1 / 4.8	6.1 / 4.7	23
BATTERY	24	Compartment Size <sup>1</sup>	Length x Width x Height	in (mm)	31.9 x 13.25 x 32 (810 x 335 x 815)		24
	25	Amp Hr Capacity	Max (6-hr)	Ah	750	750	25
	26	Weight	Min / Max	lb (kg)	900 / 1500 (410 / 680)	900 / 1500 (410 / 680)	26
	27	Lead Length	Position "B"	in (mm)	20 (508)	20 (508)	27
	28	Connector		type	SB-175 Red	SB-175 Red	28
	29	Battery Roller (Option)	Height from floor (forks lowered)	in (mm)	7.9 (200)	7.9 (200)	29

<sup>1</sup> Battery compartment size with adjustable retainers - 30.9 x 13.25 x 32 (785 x 335 x 815); w/optional rollers & side gates - 31.1 x 13.25 x 32 (790 x 335 x 815)

## Aisle Specifications

RPX Walkie/Rider Pallet			Single Pallet			Double Pallet				
SPECIFICATIONS	30	Fork Length	Nominal	in	36	42	48	84	96	30
	31		Actual	in (mm)	35.7 (910)	41.7 (1060)	47.7 (1210)	83.7 (2125)	95.7 (2430)	31
	32	Overall Truck Length		in (mm)	78.8 (2000)	84.8 (2155)	90.8 (2305)	126.8 (3220)	138.8 (3530)	32
	33	Face of Forks to Center of Load Wheel	Forks raised	in (mm)	24.4 (620)	30.4 (770)	36.4 (925)	56.5 (1435)	56.5 (1435)	33
			Forks lowered	in (mm)	28.0 (710)	34.0 (865)	40.0 (1015)	60.1 (1525)	60.1 (1525)	34
	35	Center of Load Wheel to Tip of Forks	Forks raised	in (mm)	11.3 (290)	11.3 (290)	11.3 (290)	27.2 (690)	39.2 (995)	35
			Forks lowered	in (mm)	7.7 (195)	7.7 (195)	7.7 (195)	23.6 (605)	35.6 (905)	36
	37	Wheelbase	Forks raised	in (mm)	51.6 (1310)	57.6 (1465)	63.6 (1615)	83.5 (2120)	83.5 (2120)	37
			Forks lowered	in (mm)	55.2 (1405)	61.2 (1555)	67.2 (1710)	87.1 (2215)	87.1 (2215)	38
	39	Grade Clearance	Forks raised w/pallet	%	36.4	32.5	29.4	22.4	22.4	39
	40	Turning Radius		in (mm)	68.0 (1730)	73.9 (1875)	79.7 (2025)	99.5 (2530)	99.5 (2530)	40
	41	Right Angle Stacking Aisle <sup>1</sup>	40", 42, 48" Load Width	in (mm)	78.0 (1980)	84.0 (2130)	90.0 (2285)	128.0 (3230)	140.0 (3540)	41
	42	90° Equal Intersecting Aisle <sup>1</sup>	40" Load Width	in (mm)	66.2 (1685)	69.3 (1760)	72.4 (1840)	83.6 (2125)	84.7 (2150)	42
			42" Load Width	in (mm)	67.2 (1710)	70.3 (1785)	73.4 (1865)	84.6 (2150)	85.8 (2180)	43
	44		48" Load Width	in (mm)	70.3 (1785)	73.4 (1865)	76.2 (1945)	87.8 (2230)	88.9 (2260)	44
45	Truck Weight	No load, without battery	lb (kg)	1110 (505)	1140 (515)	1165 (530)	1305 (590)	1340 (610)	45	

<sup>1</sup> Add 6-8" for ease of operation. Includes 1" clearance on each side of load.



# Platinum RPX<sup>series</sup>

## Technical Information

### Standard Equipment

1. 24-volt electrical system
2. Brushless AC drive motor and controller system
3. Multi-function digital display includes battery discharge indicator with lift lockout, (3) hour meters, and fault-code display
4. Digital CAN-bus communications
5. Programmable performance parameters
6. Ergonomic control handle with butterfly speed control
7. Fingertip control of lift, lower, and horn buttons
8. Cruise control with anti-tapedown
9. Large operator platform with anti-fatigue cushioned mat
10. Electronic horn
11. On/off key switch
12. Tapered fork tips with pallet entry/exit slides
13. Adjustable battery retainers
14. SB-175 red battery connector
15. Vulkollan poly load wheels with string guards
16. Rubber drive tire with string guard
17. Heavy-duty, spring-loaded caster wheels with string guards
18. Regenerative braking
19. Spring applied/electronically released brake system
20. Sealed switches and controller for wet, cooler and freezer applications
21. Motor and controller thermal protection
22. Hydraulic overload protection valve
23. Powder-coat paint finish

### Optional Equipment

1. Multi-function LCD display with:
  - PIN access
  - Selectable performance modes
  - BDI and speedometer
  - On-board diagnostics and troubleshooting
2. Magnetic mount convenience tray with stretch wrap holder
3. Manual or electric coast control
4. Sidetracker (requires coast control)
5. Anti-slip platform covering
6. Tilt-down load backrest with EZ release (48" or 60" extension)
7. Slip on/off load backrest (48" or 60" extension)
8. Battery compartment rollers with side gates
9. Battery gate interlock
10. Travel alarm
11. Toggle switch
12. Fork auto-lift function
13. Poly load wheels
14. Non-marking rubber, traction treaded rubber or flat poly drive tire options

### Ergonomics & Operator Comfort

A spacious operator platform and compact hood design offers the operator a variety of comfortable positions for reduced fatigue and sustained productivity. Cushioned platform mat provides added comfort.

A wide, 190° steering arc and large, sealed, ball-bearing steering mechanism allows exceptional turning with minimal effort. Spring-loaded handle and roomy steering control head promote effortless movement into the operating range. The control handle features tubular steel construction and the control head is constructed from a fiberglass-filled polymer composite, with internal steel reinforcements, for higher strength and increased durability.

Thumb or fingertip-actuated butterfly speed controls provide easy and precise operation. Ergonomic, fingertip layout of the soft-touch lift, lower and horn buttons delivers comfortable operation. Large switch on the end of the control head changes the truck's travel direction if operator contact is inadvertently made.

Soft grip, high-speed grab bar provides the operator maximum security and comfort. A center mounted control pod provides efficient operation of lift/lower, high speed and horn functions. Standard cruise control is activated by one touch of a button, allowing the operator to maintain high-speed travel, without continuously needing to hold down the button down.

Optional coast control feature allows truck to coast for more efficient order picking. Actuated by either a manual toggle lever at the base of the handle, or by an electronic switch located near the butterfly speed control.

Switches conveniently located on either side of the control handle activate the optional sidetracker feature. Used in conjunction with coast control, this feature allows the operator to walk beside the truck while performing low-level order picking, for greater efficiency and productivity.

### Efficient Performance

Heavy-duty 5.2Hp, brushless, three-phase AC drive motor provides high power and torque to handle high productivity operations, with peak performance throughout the battery range. Longer run times per battery charge are achieved by using less energy per cycle.

For enhanced efficiency, its ad motor controller/AC inverter electronically distributes power needed to the AC drive motor pump motor. This system offers programmable regenerative braking and proportional plugging. The AC design eliminates forward and reverse contactors, and uses electronic travel speed control for precise, efficient performance.

### Optional Multi-Function LCD

An optional multi-function LCD display offers PIN codes to restrict truck access, selectable performance modes for customized product and a battery discharge indicator graphic representation of remaining battery charge. Plus, with its on-board diagnostics, troubleshooting, a service adjustment capabilities, a service technician can make adjustments and perform maintenance without the need for a separate handset tool.

### Smart Electric Brake

Electrical braking system utilizes regenerative motor torque prior to brake actuation, for less component wear and longer life. The spring applied/electronically released brake system eliminates needed adjustments, resulting in reduced maintenance and lower operating costs. Brake actuation occurs within the handle in the upper and lower braking range.

### Fork Assembly

Forks are 9 1/4" wide and constructed from 1/4" plate steel, and designed with a reinforced tip for extra durability. Various lengths available for both double and single pallet fork operation. All come with standard 27" wide fork spread.

Proven, push-type lift linkage design uses rugged 1 1/2" x 1 1/2" solid steel rods to absorb high impact shock caused by dock boards and dock plates. Push type design achieves 6" of lift while preventing the tie rod from extending beyond the fork. This design also reduces maintenance since no adjustments are needed.

Alloy steel fork slides facilitate easy entry and exit eliminating the need for entry rollers or discs. Tie rods are positively aligned and pinned to eliminate the need for field adjustments. Full-length, angle iron reinforcements enhance torsion strength for increased durability and longer life.

SS-RPXN 02-10  
Printed in U.S.A.



ISO 14001:2004  
NISSAN GREEN PROGRAM

Nissan Forklift Corporation reserves the right to make product changes relating to colors, equipment, specifications or available options without notice. For more information, contact your Nissan Forklift representative.

[www.nissanforklift.com](http://www.nissanforklift.com)

# TOTAL WAREHOUSE

[www.totalwarehouse.com](http://www.totalwarehouse.com)  
833-868-2500