

TOTAL WAREHOUSE

OPERATOR SAFETY & FORKLIFT FAMILIARIZATION COURSES



OSHA Guidelines

29 CFR 1910.178

Course Title

Train The Trainer

Course Length

6-8 Hours

What Students Get

Trainer Safety Guide
Classroom Lecture
Written Assessment
Hands-On Familiarization
Behind-the-Wheel Evaluation
Course Completion Card

Certification Frequency

Lifetime validity

Contact Us

Total Warehouse
Tel: 714.332.3082
www.totalwarehouse.com

Objective

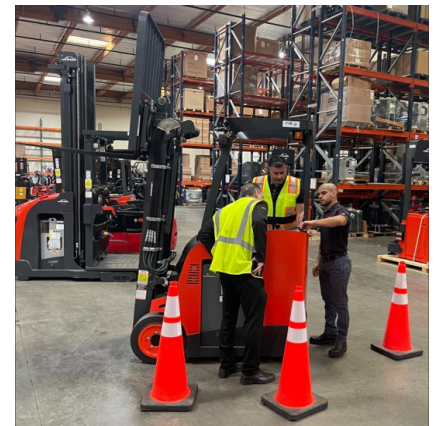
The purpose of this comprehensive hands-on course is to train and authorize selected individuals to implement and conduct your company's Forklift Operator Safety Program.

Prerequisite

Current forklift operator certification or operating experience.

Agenda

- ◆ Components of a forklift operator safety training program
- ◆ How to be an effective instructor
- ◆ How to reinforce safe operating habits
- ◆ How to conduct three-year re-evaluations
- ◆ Applicable rules and regulations
- ◆ General safety precautions
- ◆ Safe operating rules
- ◆ Operating hazards
- ◆ Classification types
- ◆ Causes of accidents
- ◆ Pedestrian supervision
- ◆ Pre-shift inspections
- ◆ Recharging/Refueling



Special Instructions

Student candidates should already be deemed as an authorized person by their employer to reinforce the safe operating skills and habits taught during operator training sessions.

Partnership

A trainer must have the "knowledge, training, and experience" to train others how to safely operate the forklift in the employer's workplace. Our Train-The-Trainer course will provide the necessary tools to facilitate classroom training; however, it is the employer's ultimate responsibility to qualify the employee as a trainer.