

Standard Equipment



Here is just a partial list of the standard features on the GO6.



Vehicle Management

Engine Control Module (ECM) to monitor engine performance
Easy-view meter panel with critical system checks & warnings

Durability Features

Wide carriage
Robust mast

Servicing Ease

5-piece overhead guard
Boltless floorboards
Gas spring assist engine hood
Easy-access filter/fluid service points

Powertrain

Common rail fuel injection with turbo charger and intercooler
Automatic 2-speed transmission
Engine temperature protection system
Floating powertrain for reduced vibration
Transmission mode selector
Heavy-duty, cushion-mounted radiator
Hydraulic oil cooler (17,500 & 22,000 lb. capacities)
Large engine oil filter and dual diesel fuel filters
Electric glow system
Cyclone air cleaner

Protection/Security

Operator Presence System:

- Seat actuated auto-mast lock system
- Automatic return-to-neutral
- Seatbelt warning
- Parking brake warning

Steering System

Adjustable tilt steering column
Small diameter steering wheel with spinner knob
Hydrostatic power steering
Rugged steer axle steering cylinder

Brake

Parking brake with warning buzzer
Hydraulic brake system with pressure accumulator
Inching pedal

Hydraulic System

3-spool hydraulic control valve
Hydraulic load sensing valve system
Triple hydraulic pumps mounted on transmission to reduce power consumption

Operator Conveniences

Full suspension seat
Deluxe standard light package with:

- Overhead Guard mounted headlights/front turn signals
- Rear combination lights – tail, brake, and back-up

Back-up alarm
Rearview mirrors
Cushioned floor mat
Heel-to-toe pedal design

Reliability.

It's the defining trait of our company and our forklifts.



UniCarriers' roots extend back over 100 years, and over that time, strong, reliable performance has always been the hallmark of our organization, our people and our equipment.

Today, our unrivaled reliability continues to provide UniCarriers' customers with a competitive edge. And together, we move the merchandise that moves world commerce with greater efficiency, economy and reliability.

When it comes to providing forklifts that make a difference for our customers and theirs...

We Never Quit.



TOTAL
WAREHOUSE

www.totalwarehouse.com

833-868-2500

UNICARRIERS
FORKLIFT

UniCarriersAmericas.com

SB-GO6 07-2015 Printed in U.S.A.

UniCarriers® is a registered trademark of UniCarriers Corporation. UniCarriers Americas Corporation reserves the right to make product changes relating to colors, equipment, specifications or available options without notice. For more information, contact your UniCarriers representative.

UNICARRIERS **TOTAL**
WAREHOUSE
FORKLIFT
www.totalwarehouse.com
833-868-2500



Engine Powered Forklifts

Diesel
15,500 / 17,500 / 22,000 lbs. Capacities | Pneumatic Tire



Platinum GO6 Series

GO6 Series Applications

Rugged durability, innovative technology and unsurpassed reliability are the hallmarks of GO6 Series performance... and the traits that make it the ideal choice for:

- Lumberyards • Brickyards • Warehousing • Recycling • Manufacturing
- or any job requiring brawn and brains



Look for this symbol — it identifies a UniCarriers forklift feature that provides a proven performance advantage as compared to competitive trucks.



NEVER QUIT.

It defines our forklifts and the company that builds them.

Over the course of a century, the company known as UniCarriers took shape. As we grew and evolved into a US manufacturer with a global reach in nearly 100 countries worldwide, much has changed, but one thing hasn't: our mission. UniCarriers is committed to providing you with the ultimate in reliability, performance, and value.

And that commitment can be seen in the GO6 Series. This workhorse is built for your biggest jobs, your toughest applications, and lifting and hauling your heaviest loads with amazing speed, productivity and reliability. The GO6 also delivers a low cost of ownership while offering lower emissions. It's backed by the best standard, limited warranty in the business. And, for all its brute strength, the GO6 brings operators unsurpassed comfort. So, if you're looking for a forklift that can do it all, take a close look at the GO6.

TOTAL
WAREHOUSE
www.totalwarehouse.com
833-868-2500



Up Your UpTime

Discover reliability features that cut downtime and keep your business up and running



Comfort Zone

Your drivers and your entire operation will benefit from our comfort & productivity features



Power & Performance

Our engines are designed and built for maximum economy, efficiency and productivity



Sweet Savings

The GO6 is designed to deliver you a low cost of ownership year after year after year



Play It Safe

Safety is everybody's business, and the GO6 is all business when it comes to safety



Control Freak

With the GO6, you're in complete control when it comes to managing costs and productivity



Make It Yours

Already well appointed, the GO6 can be customized to meet your specific needs



To learn more, and a find a dealer near you, visit UniCarriersAmericas.com

Up Your UpTime



TOTAL
WAREHOUSE
www.totalwarehouse.com
833-868-2500

Beyond its heavy-duty carriage and robust mast, you'll find that virtually every system on the GO6 is designed to deliver maximum uptime no matter how difficult the environment or the challenge. From proven technology to innovative features, the GO6 brings you a higher level of servicing ease, extended component life, and greater protection to critical components. It's reliability you can count on — and profit from.



Steering in the Right Direction

The GO6's rugged steer axle incorporates a steering cylinder housed inside it to protect against possible damage from obstacles on the road surface. It also features a simplified design with a **reduced number of service points** for quicker, simpler maintenance.



Protecting Your Investment

The **advanced Engine Protection System** on the GO6 automatically reduces engine speed in the event of overheating. The meter panel also features a warning system that alerts the operator to help protect the machine's critical components. For example, the coolant level and air cleaner performance are constantly being monitored.



Advanced Features for Longer Life

The GO6's cyclone air cleaner extends filter life and reduces dust and debris that can get caught in the engine. In addition, a **sensor on the dash panel** indicates if there is inadequate airflow to help prevent loss of performance or overheating.



Easier Access Means Easier Service

To cut maintenance time and costs, the GO6 offers fast, easy access to key systems. Components that require regular changing or inspection — such as filters, fluids, and batteries — can be accessed quickly and easily. The engine hood has gas-spring supports to open and close easily.

UNI CARRIERS
FORKLIFT

Comfort Zone

When it comes to productivity, comfort isn't a luxury — it's a necessity. That's why the GO6 features enhancements throughout its design to reduce operator fatigue, while improving operator performance. It begins with a spacious compartment, greater visibility, and ergonomically designed and logically positioned controls. But that's only the beginning. From the moment your operators step into a GO6, they'll know they're stepping up to greater comfort and convenience.



A Step Up

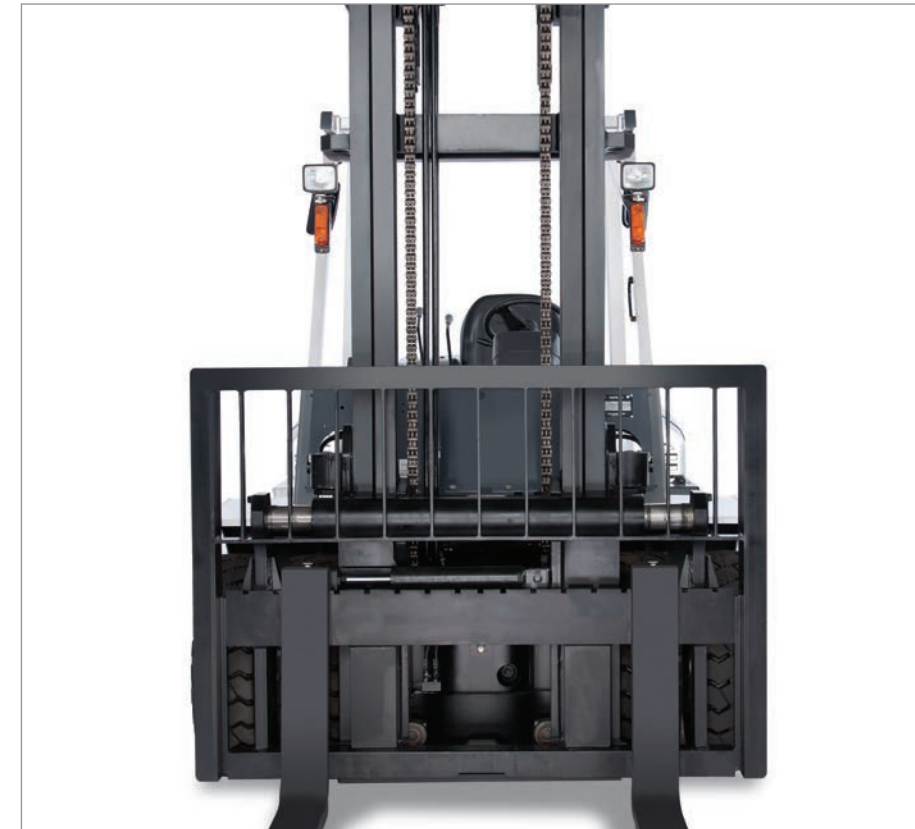
The GO6 simplifies operator entry and exit with a convenient hand grip and an extra-wide 3-step entry that includes a diamond tread or non-skid step for sure footing.



UNICARRIERS
— FORKLIFT —
TOTAL
WAREHOUSE
www.totalwarehouse.com
 833-868-2500

Visibly Better

Our super-wide carriage provides operators with improved forward and fork tip visibility for greater security and enhanced productivity. This added visibility is matched by generous headroom and plenty of foot and leg-room. There are also automotive-type controls and a small diameter steering wheel — all to reduce operator fatigue, while boosting operator confidence.



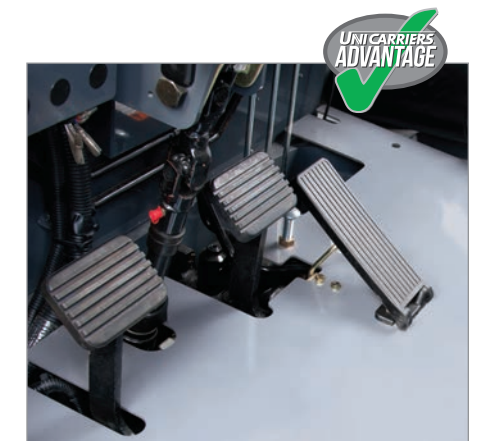
A Smoother Ride

The GO6 features a **floating powertrain** that includes independent dampeners to reduce vibrations that can cause operator fatigue. Vibration is further reduced by rubber shock absorbers located throughout the truck, and a standard thick, rubber, non-slip floor mat.



Greater Support

Operators can ride in comfort and maneuver with greater confidence from the **full-suspension seat**. The seat reclines, and adjusts easily to match its operator's weight. There are even side supports and fore-and-aft positioning for extra-customized comfort.



Sure Stopping Power, Even in an Emergency

The low pedal angles allow **heel-to-toe movement** between the gas and brake pedals. Plus, the GO6 features a full hydraulic powered brake system for sure stops and less operator fatigue. The system even provides emergency braking power in the event the engine is stopped.



Power & Performance

At the heart of GO6 is one of the most powerful, durable and efficient diesels in its class. This turbocharged, electronically controlled engine pours out massive torque at low rpm — producing very low emissions. We've matched this rugged power plant with an arsenal of proven components, like a rugged transmission, triple hydraulics, and an extra large cooling system — all to turn the power of the GO6 into profits for your business.

Higher Performance Right from the Start

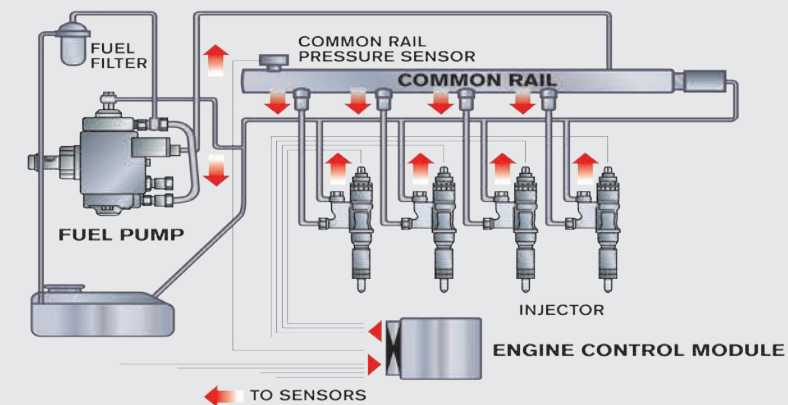
The GO6 features an Electronic Glow System for superior cold weather starting. And once a GO6 gets going, it moves fast thanks to a heavy-duty, electronic, two-speed transmission that delivers efficient power transfer. The result? Some of the fastest lift speeds in the industry.



Triple Hydraulic System

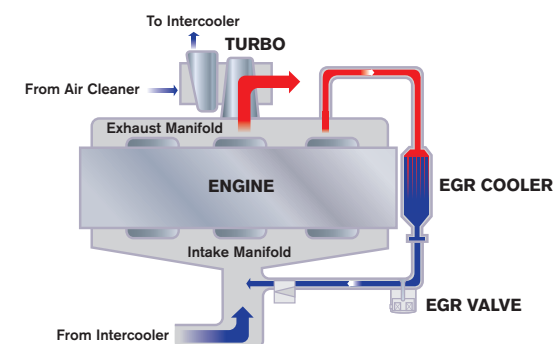
The GO6 features a triple hydraulic pump system — one for lifting, one for steering, and one for braking. The result? The operation of one function doesn't impact the performance of another. For example, there is no loss of steering or maneuvering capabilities while lifting.

UNI CARRIERS
FORKLIFT
TOTAL
WAREHOUSE
www.totalwarehouse.com
833-868-2500



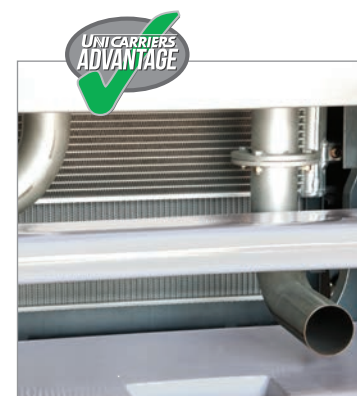
Common Rail Fuel Injection for Uncommon Performance

The GO6's advanced engine technology includes a common rail fuel injection system, which uses the optimal amount of fuel at the ideal time, resulting in greater power with improved fuel economy.



More Power with Lower Emissions

The engine's turbocharger creates more power by compressing the inlet air and forcing it into the chamber. This constant pressure boost occurs over the entire rpm range, for **greater torque at even low speeds**. An intercooler raises power further, while offering a substantial reduction in nitrogen oxides and particulate matter emissions through its **Exhaust Gas Recirculation system** — thanks to this innovative technology, the GO6 emits low exhaust levels.



Another Cool Idea

The highly reliable cooling system on the GO6 is designed to keep its cool even under heavy usage and high temperatures. The system includes a large, heavy-duty radiator that is rubber mounted to **reduce flexing and absorb vibration**.



A Mast That Can Lift Your Entire Business

Robust mast construction features larger rail dimensions to more easily handle heavy loads, and provides exceptional reliability and enhanced visibility to the load for greater operator confidence.

Sweet Savings

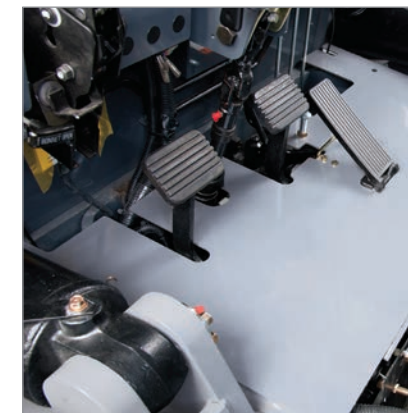


The GO6 offers you a lot of power, including the power to save money. Whether it's the durability of its chassis and mast, its heavy-duty components, its design innovations that simplify and extend maintenance, or its ergonomic compartment layout that lifts productivity, the GO6 is engineered to raise your profits, while lowering your costs.



Our Overhead Guard Reduces Your Overhead

Beyond ample headroom, the five-piece overhead guard takes **75% less time to make needed replacements** versus competitive designs using a single-piece, welded-on guard. That cuts downtime and costs.



Boltless Floorboards

Ready access to key components can save you time and money during routine maintenance. That's why the GO6 makes those components readily accessible. The front and rear floorboards can be removed and reinstalled quickly and easily without any tools to gain access to the transmission and hydraulics.



Engine Compartment

Operators and service technicians can access the engine with ease using the remote engine hood release lever. Two gas spring assists make opening the hood easy, and, of course, no tools are required.

On the GO6, all routine maintenance points are readily and easily accessible for quick servicing, including:



- Oil check
- Radiator fluid
- Engine Control Module
- Dual fuel filters
- Oil filter
- Battery compartment
- Electrical system



Matching Work Conditions

The GO6 features a transmission mode selection switch that changes the shift speed pattern of the transmission, allowing your operator to **select the best mode for the current working conditions**. Operators can choose a Normal Mode, Gradient Mode for working on slopes with heavy loads, and a High Speed Mode for longer trips. This feature improves both operating efficiency and fuel economy.

UNI CARRIERS®
— FORKLIFT —
TOTAL
WAREHOUSE
www.totalwarehouse.com
 833-868-2500

Play It Safe

Safety is everybody's business, and when it comes to safety, the GO6 is all business. From greater visibility to better handling, from lower emissions to enhanced reliability, the GO6 helps you create a more productive workplace without sacrificing safety. Whether your operators are running the truck or exiting it, the GO6 has a system in place to help protect them and everything — and everybody — around them.



Operator Presence System

This comprehensive safety system includes a **seat-actuated power interrupt** with **mast-lock**, automatically preventing lift and tilt operations if the operator leaves the seat. The **return-to-neutral** feature minimizes forklift movement if the operator leaves the truck while still in gear. Other audible and visual warnings come standard, including a **parking brake alarm**.



A Good Start

A **neutral start** mechanism prevents the engine from being started unless the directional control lever is in the neutral position. This prevents the truck from moving abruptly when the starter switch is turned.



A Less Fatigued Operator

The GO6 includes an array of features designed to prevent operator fatigue: from the adjustable, **full suspension seat** to responsive **hydrostatic steering**, to heavy insulation that reduces noise and engine heat, to ergonomically positioned controls, to our floating powertrain that reduces vibration, the GO6 is designed to keep operators alert and in control.



Right In View

Designed for maximum clarity, and featuring indicators that are brightly lit with long-life LEDs, the instrument panel is easy to read and simple to understand — so operators can focus on their jobs.



Deluxe Light Package Is Our Standard

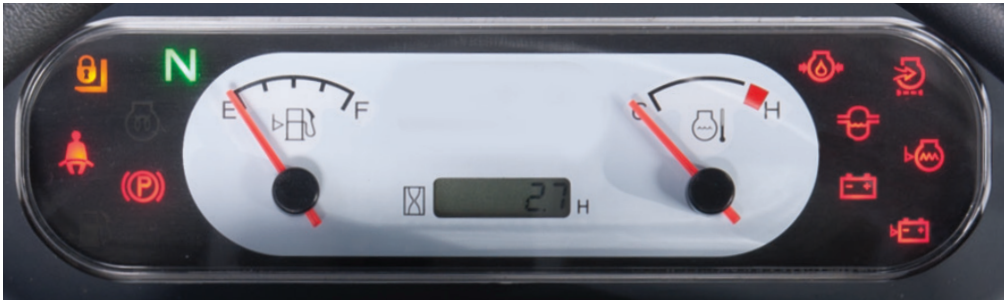
The GO6 features overhead guard-mounted headlights to enhance operator visibility. Our Deluxe Light Package includes front turn signals mounted on front pillars for high visibility, and a rear light combination that includes brake, turn, and backup lights, as well as reflectors. There are also dual rearview mirrors for greater operator confidence.



Control Freak



The GO6 is engineered to give you and your operators more control. When it comes to your operation, the GO6 can help you better control costs, downtime, and workflow. For your operators, it offers innovations that give them more control when handling loads, maneuvering, and servicing the vehicle. Whether you're running the operation or operating the forklift, you're always in the driver's seat with a GO6.



Information At A Glance

The easy-view meter panel enhances driving ease and provides constant status on critical systems. The highly visible gauges give an accurate readout on fuel and coolant temperatures, and include an hour meter and error codes. The bright LED warning lights give up-to-the-second alerts on:

- Low engine oil pressure
- Coolant level
- Battery charge
- Check engine
- Fuel gauge
- Seatbelt
- Neutral transmission
- Air cleaner
- Engine pre-heating glow plug
- Engine coolant temperature
- Parking brake



Adjustable Steering Column

The GO6 is equipped with an infinitely adjustable tilt steering wheel – its small diameter design and spinner knob give drivers precise control of the machine during travel.



Precise Handling

The GO6 includes a separate inching pedal for small, precise movement. The open floorboard area also offers more foot and legroom, while the **low pedal angles allow heel-to-toe movement** between gas and brake pedals for easy handling.



Greater Maneuverability

With rugged, dual drive, pneumatic tires, the GO6 offers **ground hugging traction and smooth handling when traveling**. The hydrostatic power steering system also provides superb maneuverability, with fast, precise response to navigate loads through tight areas.



Make It Yours

The rugged GO6 comes with a wide array of standard features that maximize uptime and productivity. We also offer a complete menu of options to customize your forklift to your specific requirements. Check out this list, and if you don't see what you're looking for, contact your Nissan Forklift by UniCarriers dealer for more options.

- Wide Hook Type Carriage – 94.9 in. (2410mm) Wide
- Integral Sideshifter – 66.9 in. (1700mm) Wide
- 4-Spool Valve & Lever
- Clamp Release Interlock – required with clamping attachments
- Mast Tilt Gauge
- Tilt Cylinder Boots
- Radiator Screen
- Vertical Exhaust
- Air Intake Pre-Cleaner
- Double Element Air Cleaner
- Rear Work Light
- Rotating Beacon – Amber



Rotating Beacon



Air Intake Pre-Cleaner



Rear Work Light

Specifications

Model	Load Capacity* lbs. (kg)	Overall Width in (mm)	Min Outside Turning Radius in (mm)	5.2 Liter 4-Cylinder, 16-Valve Diesel Engine		
				Displacement cu in (L)	Output Hp (kW) @ rpm	Torque ft-lb (Nm) @ rpm
FD70-2	15500 (7000)	78.5 (1995)	133.1 (3380)	316.9 (5.2)	117 (87) @ 2000	359 (486.7) @ 1500
FD80-2	17500 (8000)	85.2 (2165)	142.9 (3630)	316.9 (5.2)	117 (87) @ 2000	359 (486.7) @ 1500
FD100-2	22000 (10000)	88.4 (2245)	152.8 (3880)	316.9 (5.2)	117 (87) @ 2000	359 (486.7) @ 1500

* Based on 600mm load center



To learn more, and find a dealer near you, visit UniCarriersAmericas.com