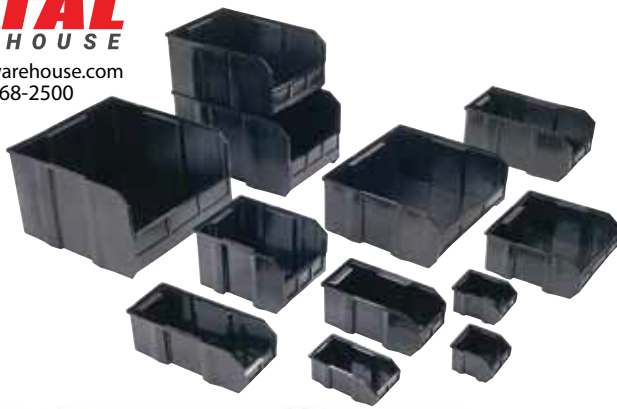


CONDUCTIVE BINS, HANGING SYSTEMS & RACKS

TOTAL
WAREHOUSE

www.totalwarehouse.com
833-868-2500



Conductive Ultra Stack Bins and Dividers

Protect your electronic components from typical electromagnetic interference (EMI), electrostatic or induced fields with these conductive polypropylene bins. The conductive material provides a barrier which these fields cannot penetrate and prevents the build-up of electrostatic charge. Bins are permanently conductive and are unaffected by washing with normal cleaners. Molded from a carbon filled copolymer polypropylene material with an electrostatic decay rate at less than 0.1 second that meets military specification Mil-B-81075B. Its surface resistivity is less than 10^5 Ohms-per square. Easy access to stored items with hopper front bin and label holder provides fast identification. Reinforced side walls and wide ledge allow high stacking on benches or shelving. Be sure all units are properly grounded according to your use. Color is Black.

MODEL NO.	OUTSIDE DIMENSIONS L" x W" x H"	CTN QTY	CTN WGT	DIVIDER	CTN QTY
QUS205CO	4-1/2" x 4-1/8" x 3"	24	5 lbs	DUS205CO	6
QUS210CO	5-3/8" x 4-1/8" x 3"	24	6 lbs	DUS210CO	6
QUS220CO	7-3/8" x 4-1/8" x 3"	24	8 lbs	DUS220CO	6
QUS230CO	10-7/8" x 5-1/2" x 5"	12	12 lbs	DUS230CO	6
QUS233CO	13-1/2" x 5-1/2" x 5"	12	13 lbs	DUS233CO	6
QUS235CO	10-7/8" x 11" x 5"	6	10 lbs	DUS235CO	6
QUS239CO	10-3/4" x 8-1/4" x 7"	6	10 lbs	DUS239CO	6
QUS240CO	14-3/4" x 8-1/4" x 7"	12	24 lbs	DUS240CO	6
QUS250CO	14-3/4" x 16-1/2" x 7"	6	21 lbs	DUS250CO	6
QUS255CO	16" x 11" x 8"	4	14 lbs	DUS255CO	6
QUS260CO	18" x 11" x 10"	4	17 lbs	DUS260CO	6
QUS270CO	18" x 16-1/2" x 11"	3	16 lbs	DUS270CO	6

Customize your own unit!

1. Select the unit of your choice.
2. Use the chart above and choose which bin would best fit your needs.
3. Go to the chart at the bottom of this page and determine how many bins fit on the unit you selected.
4. Place your order for both unit and bins (Sold in carton quantities).



Conductive Stack & Lock Bins

Be sure all units are properly grounded according to your use. See page 53 for non-conductive Stack & Lock Bins. Color is Black.

MODEL NO.	OUTSIDE DIMENSIONS L" x W" x H"	CTN QTY	CTN WGT
QCS10CO	4" x 3-7/8" x 2"	48	7 lbs
QCS20CO	7" x 3-7/8" x 2-7/8"	48	14 lbs
QCS30CO	10-1/4" x 5-7/8" x 5-1/8"	12	12 lbs
QCS35CO	14" x 4-5/8" x 4-7/8"	12	15 lbs
QCS40CO	13-1/2" x 8-1/8" x 6-1/8"	8	13 lbs

LARGEST CONDUCTIVE SELECTION AVAILABLE ANYWHERE!

Single Sided, Double Sided and Double Sided Mobile Rail Systems

All conductive metal racks and bins resist static build-up. Bins are easily removed, refilled and replaced. All metal components have a powder coated conductive finish which provides years of heavy-duty service. Be sure all units are properly grounded according to your use.

QRU-16DCO - Double Sided Rack 16 Rails

Accepts 3 sizes of Ultra bins (up to 96 bins) 500 lb. capacity. See chart for combinations. Bins sold separately. Be sure all units are grounded according to your use.



QRU-16SCO
(Bins sold separately)



QRU-16DCO +
QRU-MOBSCO
(Bins sold separately)

QUANTITY OF ULTRA BINS TO FIT RAIL UNITS

MODEL NO.	DESCRIPTION	DIMENSIONS L" x W" x H"	QUS 205	QUS 210	QUS 220	QUS 230	QUS 233	QUS 235	QUS 239	QUS 240	QUS 250	QUS 255	QUS 260	QUS 270
QRU-12SCO	Rack, 1 Sided 12 Rail	36" x 15" x 53"	96	96	96	-	-	-	24	24	12	12	12	8
QRU-16SCO	Rack, 1 Sided 16 Rail	36" x 15" x 53"	-	-	-	48	48	24	-	-	-	-	-	-
QRU-12DCO	Rack, 2 Sided 12 Rail	36" x 20" x 53"	192	192	192	-	-	-	48	48	24	24	24	16
QRU-16DCO	Rack, 2 Sided 16 Rail	36" x 20" x 53"	-	-	-	96	96	48	-	-	-	-	-	-
QRU-MOBSCO	Mobilizes Double Sided Units													

See chart above for bin dimensions



**LOWEST
PRICE
GUARANTEED!**